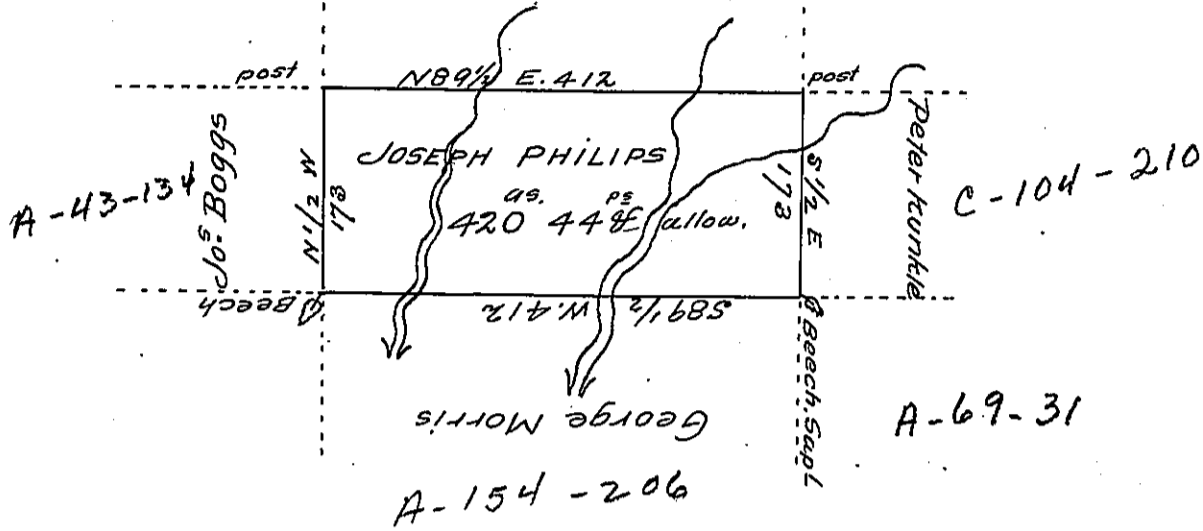


Page-191

Peter Philips

R-290




A Draught of a tract of land Called \_\_\_\_\_ situate in the County of Luzerne adjoining George Morris & others. Surveyed the 18<sup>th</sup> day of Septem<sup>r</sup>: 1792 for Joseph Philips in pursuance of a warrant bearing date the 3<sup>d</sup> day of April 1792. Containing Four hundred twenty acres & Forty four perches & the allowance of Six p. Cent &c.

Ant<sup>y</sup>: Grothers D.S.

To  
 Dan<sup>l</sup>: Brodhead Esq<sup>t</sup>  
 Surveyor General

IN TESTIMONY that the above is a copy of the original remaining on file in the Department of Internal Affairs of Pennsylvania, made conformably to an Act of Assembly approved the 16th day of February, 1833, I have hereunto set my Hand and caused the Seal of said Department to be affixed at Harrisburg, this second day of August 1906

  
 Secretary of Internal Affairs.